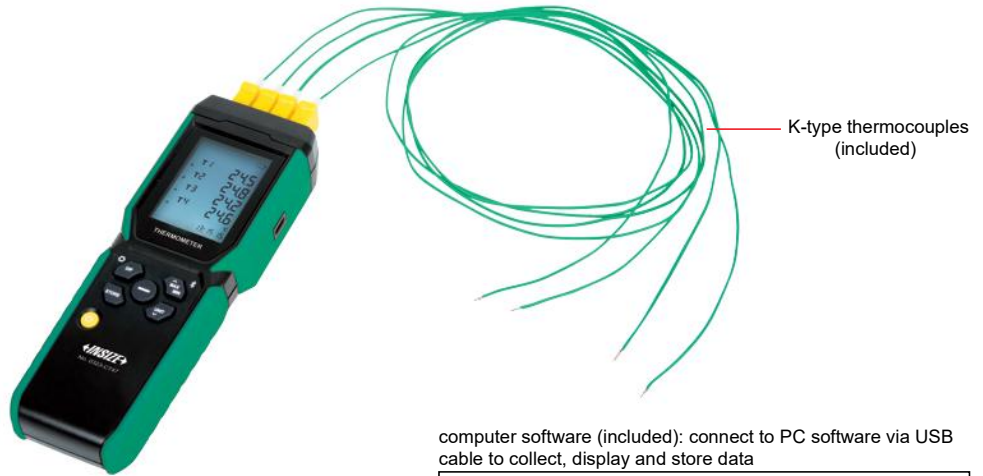


THERMOCOUPLE THERMOMETER (FOUR CHANNELS) CODE 0323-CT47

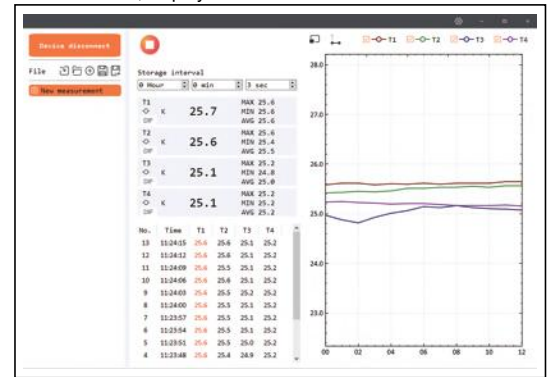
BUILT-IN
BLUETOOTH

DATA
OUTPUT

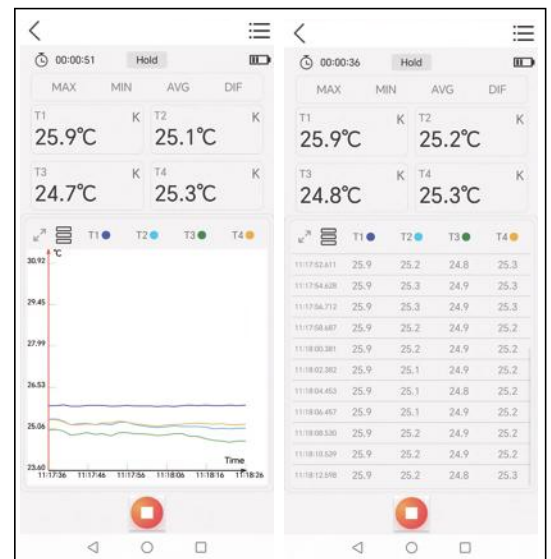
- Unit: °C/°F/K
- Channels are compatible with 7 types of thermocouples K, J, T, E, R, S and N
- MAX/MIN/AVG/DIF mode
- 72000 data storage
- Offset value compensation
- Data hold function
- Display backlight
- Over range indicator
- Battery level display
- Automatic power off
- Built-in Bluetooth, mobile APP is included
- Computer software is included



computer software (included): connect to PC software via USB cable to collect, display and store data



mobile APP (included): connect to mobile APP via Bluetooth to collect, display and store data, and can export the data stored on the device



SPECIFICATION

Thermocouple type	J/K/T/E/R/S/N	
Temperature range (electrical signal)	K: -200°C~1372°C	
	J: -210°C~1200°C	
	T: -250°C~400°C	
	E: -150°C~1000°C	
	R: 0°C~1767°C	
	S: 0°C~1767°C	
Temperature accuracy (electrical signal)	N: -200°C~1300°C	
	±(0.2%· t +0.5°C) (at -10°C~1767°C);	
	±(0.2%· t +1.0°C) (at -200°C~-10°C);	
	±(0.2%· t +2.5°C) (at -250°C~-200°C)	
	Temperature resolution	0.1°C (<1000°C); 1°C (≥1000°C)
	Repeatability	±(0.1%· t +0.3°C)
Response time	500ms	
Logging interval	1s~24h (adjustable)	
Memory capacity	72000	
Data transmission	TYPE-C USB, Bluetooth	
Power frequency anti-interference	50/60Hz	
Input protection	60Vmax	
Drop proof	1m	
Power supply	3×AAA alkaline batteries, working time>30h;	
	TYPE-C USB (only be connected to a PC power)	
Operation environment	temperature: -10°C~50°C	
	humidity: <90%RH (non-condensing)	
Storage environment	temperature: -20°C~60°C	
	humidity: <90%RH (non-condensing)	
Dimension	180mm×63mm×38mm	
Weight	250g (including batteries)	

*Accuracy is specified for ambient temperature between 18°C and 28°C, the above specification does not include thermocouple probe error

STANDARD DELIVERY

Main unit	1 pc
Battery (AAA)	3 pcs
USB cable	1 pc
K-type thermocouple (0323-K01)	4 pcs

SPECIFICATION OF K-TYPE THERMOCOUPLE*

Code	Range	Accuracy	Length
0323-K01	-40°C~260°C	±0.75%	900mm

*Other models, temperature range and length of thermocouples can be customized